

The Global **NEW LIGHT** of MYANMAR

Government pledges K500 billion for rescue and relief efforts

Well-wishers donated K104.44 billion and K12.4 billion worth of donated items, totalling K116.84 billion for rescue and rehabilitation in quake-affected areas.



State Administration Council Chairman Prime Minister Senior General Min Aung Hlaing and dignitaries observe a solemn one-minute silence, paying tribute to lives lost and property damaged by the devastating earthquake, during the cash-donation ceremony for rescue and relief efforts.

A CEREMONY to donate cash to be spent on relief and rehabilitation measures in the earthquake-affected areas took place at Tabaung ground in Nay Pyi Taw yesterday afternoon, attended by State Administration Council Chairman Prime Minister Senior General Min Aung Hlaing who accepted cash donations.

Speaking on the occasion, the Senior General said that it is necessary to take lessons from the past incidents of powerful earthquakes. With regard to the impacts of the earthquake, he continued that he immediately released an item of information about the earthquake. The information comprised the fact that as it would take a long time to carry out rescue and rehabilitation operations, it is necessary to seek foreign aid.

In a few hours after the earthquake struck, international rescue teams including the rescue squad from China arrived in Myanmar, bringing along with aid and supplies. They conduct rescue operations in the affected areas shortly. So, he expressed his thanks to these rescue teams for their efforts and the international community for providing relief aid. Likewise, the Senior General added that he made telephone contacts with the Indian Prime Minister; the ASEAN Alternate Chair Malaysian Prime Minister and the Pakistani Prime Minister to provide aid for Myanmar. Moreover, Heads of State and government from Cambodia, Brunei and Nicaragua including President of the People's Republic of China Xi Jinping sent messages of condolences and empathy to

him with necessary aid.

The government has allocated K500 billion and has already begun relief and rescue operations. Regarding infrastructure, it has been found that some buildings were constructed without considering potential earthquake damage, which contributed to the unfortunate loss of lives, injuries, and missing persons in this recent natural disaster. As of 8 am on 1 April, according to collected data, the earthquake has resulted in 2,719 deaths, 4,521 injuries, and 441 missing persons. Rescue operations are being carried out with full effort.

During his visit to the earthquake-affected areas for inspection, he underscored that natural disasters such as earthquakes posing significant engineering challenges. From an engineering perspective, it

became evident that buildings should be constructed systematically with careful planning.

In areas affected by severe damage and losses, the initial phase will involve clearing debris. In the second phase, efforts will be made to restore transport and communication routes as quickly as possible to their original state. The third phase will focus on the continued removal of hazardous structures that are at risk of collapsing. Through these measures, reconstruction and rehabilitation efforts will be carried out. It is necessary to persistently work on rebuilding and restoring roads, bridges, and public infrastructure that were damaged or destroyed by the earthquake.

SEE PAGE 4

OPINION

Value humanitarian aid, rescue efforts of foreign squads

PAGE 8

NATIONAL

PAGE 7



Global rescue teams and medical aid reach Nay Pyi Taw

NATIONAL

PAGE 10



Ongoing rescue, rehabilitation, healthcare in Nay Pyi Taw

NATIONAL

Collective Strength: Key to Sustainable Development Beyond Government Efforts

WHILE the government must spearhead comprehensive and equitable development of the Union, sustainable progress can only be achieved through the collective strength of its people.

(Excerpt from the speech given by Chairman of the State Administration Council Prime Minister Senior General Min Aung Hlaing at the ceremony of presenting awards to outstanding students who passed the matriculation examination 2024 with distinctions in all subjects on 22 July 2024)

State Administration Council enacts Union Tax Law 2025

THE State Administration Council enacted the Union Tax Law 2025 as the State Administration Council Law No 6/2025 under Section 419 of the Constitution of the Republic of the Union of Myanmar on 31 March.

The law consists of 10 chapters — title, date of effect and definition for Chapter I, levying planned tax for Chapter II, setting tariff and reporting for Chapter III, authority of relevant ministry for Chapter IV, special commodity for Chapter V, commercial tax for Chapter VI, income tax for Chapter VII, tax for jewellery for Chapter VIII, tariffs for other taxes for Chapter IX and general for Chapter X. — MNA/TTA

Peaceful traditions take centre stage at this year's Thingyan

A recent severe earthquake has resulted in deaths and injuries in the Nay Pyi Taw Council Area, Sagaing, Bago, Magway, and Mandalay regions, as well as in Shan State.

Given the nationwide grief, this year's Myanmar Thingyan water festival will be observed as a peaceful occasion in pursuit of traditional culture and will not include joyous singing and dancing. — MNA/TH

Announcement for local and foreign well-wishers to donate cash to earthquake victims

- An announcement has been issued that well-wishers at home and abroad can donate cash and kind to victims affected by a powerful earthquake which centred near Mandalay on 28 March 2025.
- If well-wishers wish to donate cash through mobile payment, they can scan QR codes of KBZ Pay, CB Pay, AYA Pay, OK\$ and Wave Money or contact QR Code number of KBZ Pay 70157401001. If they wish to donate cash through Wave Money, they can pay cash to telephone numbers 09 255001542 and 09 255001543 directly. A single QR Scan can be used to pay KBZpay MMQR through any digital wallets or banking mobile application allowed by CBM.
- If they donate cash through banking services, they pay cash in Myanmar kyat to the Account Number OA-011834 of Myanma Economic Bank in Nay Pyi Taw through the following ways: -
 - They can donate cash at Nay Pyi Taw Branch of MEB or other MEB branches or all private bank branches.
 - They can donate cash through the account transfer opened at State-owned or private-owned banks.
- Moreover, those wishing to donate foreign currencies can pay cash to Foreign Account Number EDN-600018 opened at MEB in Nay Pyi Taw through the following ways: -
 - They can donate dollar, euro and Singapore dollar in cash to the MEB directly.
 - They can make donations through the Account Transfer from their foreign accounts.
 - Well-wishers at home and abroad wishing to donate foreign currencies to -

- SWIFT CODE/BIC	- MFTBMMMY
- Beneficiary Name	- Natural Disaster Management Fund
- Beneficiary A/C No	- EDN-600018

5. Well-wishers can inquire about and donate cash and kind to following persons: -

Nay Pyi Taw	Yangon	Mandalay
Daw Lei Lei Aye Director-General Disaster Management Department 0673404050, 092021491	U Than Soe Director Disaster Management Department Yangon Region Office 09250123885	U Aye Min Thu Director Disaster Management Department Mandalay Region Office 09420708827
U Win Shwe Deputy Director-General Disaster Management Department 0673404048, 09254170011	Daw Than Than Win Deputy Director Disaster Management Department Yangon Region Office 09420740160	Daw Thet Thet Aye Deputy Director Disaster Management Department Mandalay Region Office 09400502056
Daw Phyu Phyu Win Director Disaster Management Department 0673404316, 0943054844		

- Donations can be sent to the following addresses: -
 - Relevant Region or State Governments
 - Office No 23, Ministry of Social Welfare, Relief and Resettlement, Nay Pyi Taw
 - Central Store Depot (Yangon), Disaster Management Department, Ward 3, Kyaikwaing Pagoda Road, Yangon
 - Central Store Depot (Mandalay), Disaster Management Department, 65th Street between 34th and 35th streets, Pyigy Myetshin Ward, Chanayethazan Township, Mandalay

National Disaster Management Committee



NATIONAL

Residents Urged to Prioritize Public Safety Amid Armed Terrorist Threats

ARMED terrorists have been launching attacks by using residential homes and administrative buildings in towns and villages as cover, where they have forcibly settled. They aim to shield themselves from Tatmadaw counterattacks while also persuading temporarily displaced persons to return to their native areas and recruiting new members. That enables terrorists to use civilians as human shields. Tatmadaw is committed to safeguarding the sovereignty of the State and will respond to these threats based on intelligence and prevailing conditions. Therefore, residents in areas where terrorists have taken control must prioritize their safety and protect themselves from being exploited by these groups.

(Excerpt from guidance given by Chairman of the State Administration Council Prime Minister Senior General Min Aung Hlaing to Shan State cabinet members and state-level departmental officials on 3 September 2024)

SAC Chairman Defence Services C-in-C Senior General Min Aung Hlaing inspects damage at Maravijaya Buddha Image, religious buildings in precinct of Buddha Park

No damage or unusual state was found at Maravijaya Buddha Image but other religious edifices have seen some extent of damage.

CHAIRMAN of the State Administration Council Commander-in-Chief of Defence Services Senior General Min Aung Hlaing yesterday morning inspected the damage to the Maravijaya Buddha Image which is the tallest sitting marble Buddha image worldwide and other religious buildings in the precinct of the Buddha Park in Dekkhinathiri Township of Nay Pyi Taw.



State Administration Council Chairman Defence Services Commander-in-Chief Senior General Min Aung Hlaing hears the report on the condition of the Maravijaya Buddha Image following the powerful earthquake.

At the office of the Image Board of Trustees, Chairman of the Board U Thant Swe, Union Minister for Energy U Ko Ko Lwin and Director of Military Engineers Maj-Gen Zaw Naing Oo, Union Minister for Construction U Myo Thant and officials reported to the Senior General on daily and monthly checking the datum points and measurements of the Image and the throne, no change in datum points of these structures after the earthquake struck on 28 March, no unusual state of the image and the throne, some damaged parts at the terrace, Gandakuti chamber and slabs as well as some religious buildings, and repair process, systematic checking the structures of the Image in the shocks of earthquake with the use of modern technology to set records, systematic repair of some damaged parts and preventive measures for future earthquakes.

In his response to the reports, the Senior General said that from the very beginning of

the construction of the Maravijaya Buddha Image, careful planning and modern engineering techniques were employed to ensure its long-term durability, resilience against strong winds, earthquake resistance, and protection from natural disasters. Hence, despite the occurrence of a severe earthquake, he continued that the image and its terrace did not experience any tilting, subsidence, or structural fractures. So, he added that officials have to oversee the repairing of only minor damages and systematically repair and maintain the structures as necessary.

The Senior General cordially greeted the pilgrims at the Buddha image. He inspected the precinct of the image and the passage of the Gandakuti

chamber and maintenance of some damaged parts. He then beat the bell of the image.

The Senior General also looked into damaged parts of Aggadhipati Sasana Beikman and gave necessary guidance to officials.

In a meeting with the chair and members of the Image Board of Trustees, the Senior General said that the severe earthquake posed a significant challenge for engineers and engineering technologies. During such an extremely intense and rare earthquake, it is a great source of pride that the Maravijaya Buddha Image and its grand platform did not experience any tilting, subsidence, or cracks in their attached parts, and that damage to other religious structures was minimal. Hence, it is necessary

to systematically maintain the Image and religious buildings for their long-term existence.

The Maravijaya Buddha Image was sculpted in separate sections using CNC machines in a step-by-step carving process. Modern engineering techniques were applied to ensure the structural integrity of the image during the assembly of its parts. To ensure the long-term durability of the sacred Buddha image, the foundation was designed to withstand up to 20,000 tonnes. It was also engineered to endure wind speeds of up to 120 miles per hour from severe storms, withstand earthquakes of up to 8.8 magnitude—the highest recorded seismic activity in Myanmar – and remain unaffected by lightning strikes. The entire construction was meticulously

calculated and executed from an engineering perspective to ensure its resilience and longevity. The connection of the large rocks of the Buddha Image was carried out using a combination of traditional methods and modern engineering techniques. The Maravijaya Buddha Image, standing 63 feet tall with an 18 feet high throne, reaching a total height of 81 feet, was successfully built and enshrined as the world's largest Buddha image in conformity with the architectural style of the Yadanabon era, blended with modern construction techniques to create a magnificent and awe-inspiring structure. Remarkably, despite experiencing a powerful earthquake, the statue sustained no damage, demonstrating an impressive feat of engineering excellence. — MNA/TTA

ပလ္လင်တော်ကြီးအား လစဉ် တိုင်းတာစစ်ဆေးခြင်းမှတ်တမ်း (ဒုတိယနှစ်)

စဉ်	ရက်စွဲ	ပလ္လင်တော် ရေညာ (P-6)	ပလ္လင်တော် ရေတယ် (P-7)	ပလ္လင်တော် နောက်ညာ (P-8)	ပလ္လင်တော် နောက်တယ် (P-9)	မှတ်ချက်
၁	၂၇.၈.၂၀၂၄	x - (-8.101) m y - 2.610 m z - 3.910 m	x - 8.096 m y - 2.572 m z - 3.918 m	x - (-8.069) m y - 13.873 m z - 3.922 m	x - 8.132 m y - 13.841 m z - 3.921 m	
၂	၂၇.၉.၂၀၂၄	x - (-8.099) m y - 2.610 m z - 3.911 m	x - 8.094 m y - 2.572 m z - 3.918 m	x - (-8.068) m y - 13.873 m z - 3.921 m	x - 8.131 m y - 13.840 m z - 3.920 m	
၃	၂၇.၁၀.၂၀၂၄	x - (-8.098) m y - 2.610 m z - 3.909 m	x - 8.094 m y - 2.573 m z - 3.918 m	x - (-8.071) m y - 13.872 m z - 3.921 m	x - 8.131 m y - 13.839 m z - 3.921 m	
၄	၂၇.၁၁.၂၀၂၄	x - (-8.100) m y - 2.610 m z - 3.910 m	x - 8.093 m y - 2.574 m z - 3.919 m	x - (-8.070) m y - 13.872 m z - 3.920 m	x - 8.131 m y - 13.840 m z - 3.919 m	
၅	၂၇.၁၂.၂၀၂၄	x - (-8.102) m y - 2.609 m z - 3.909 m	x - 8.093 m y - 2.573 m z - 3.917 m	x - (-8.068) m y - 13.872 m z - 3.921 m	x - 8.131 m y - 13.840 m z - 3.919 m	
၆	၂၇.၁၂.၂၀၂၄	x - (-8.101) m y - 2.609 m z - 3.910 m	x - 8.093 m y - 2.573 m z - 3.917 m	x - (-8.069) m y - 13.873 m z - 3.922 m	x - 8.131 m y - 13.840 m z - 3.921 m	
၇	၂၇.၁၂.၂၀၂၄	x - (-8.100) m y - 2.610 m z - 3.910 m	x - 8.093 m y - 2.573 m z - 3.917 m	x - (-8.068) m y - 13.871 m z - 3.921 m	x - 8.131 m y - 13.841 m z - 3.919 m	
၈	၂၇.၁၂.၂၀၂၄	x - (-8.101) m y - 2.610 m z - 3.910 m	x - 8.092 m y - 2.574 m z - 3.918 m	x - (-8.068) m y - 13.870 m z - 3.921 m	x - 8.131 m y - 13.841 m z - 3.920 m	
၂၀၂၄.၂၀၂၅ ခုနှစ် ဇူလိုင်လ အစီရင်ခံစာ အရ အင်အားပြင်း လေ့လာပုံစံဖြင့် (၇၇ မှုန်ကျ)						
၉	၂၈.၇.၂၀၂၅	x - (-8.102) m y - 2.612 m z - 3.908 m	x - 8.092 m y - 2.575 m z - 3.916 m	x - (-8.067) m y - 13.870 m z - 3.921 m	x - 8.130 m y - 13.840 m z - 3.921 m	

❖ ငလျင်မလှုပ်ခတ်မီ လစဉ်တိုင်းတာစစ်ဆေးချက်များနှင့် ငလျင်လှုပ်ခတ်ပြီး တိုင်းတာစစ်ဆေးခြင်းများအရ Datum Point များ သိသိသာသာ ပြောင်းလဲသွားခြင်း မရှိပါ။
❖ ဆင်းတုတော်ကြီးနှင့် ပလ္လင်တော်ကြီး တိမ်းစောင်းခြင်း၊ နိမ့်ကျခြင်း၊ တွဲဆက်ထားသည့်အပိုင်းများကွဲအက်ခြင်း လုံးဝမရှိကြောင်း စစ်ဆေးတွေ့ရှိရပါသည်။

NATIONAL

SAC Chair PM Senior General Min Aung Hlaing inspects quake-damaged parts of Hluttaw buildings



State Administration Council Chairman Prime Minister Senior General Min Aung Hlaing views round the damaged parts of the Hluttaw yesterday.

CHAIRMAN of the State Administration Council Prime Minister Senior General Min Aung Hlaing yesterday morning inspected damaged parts at Hluttaw buildings

caused by the earthquake in Nay Pyi Taw Union Territory and gave necessary guidance.

He inspected the Pyithu Hluttaw building, the Pyidaungsu Hluttaw building, the

bridge and the archway to No 1 Gate and the Amyotha Hluttaw building. Speaker of Pyithu Hluttaw U T Khun Myat and officials reported on damage to buildings.

After hearing the reports,

the Senior General stressed the need to systematically repair the damaged Hluttaw buildings. These repair processes must be done in steps to ensure the long-term existence and strength-

ening of structures. The Senior General also underlined that it is necessary to keep records on damage and repair works systematically. — MNA/TTA

Government pledges K500 billion for rescue and relief efforts

FROM PAGE 1

Then, at 12:51:02 pm, as part of a nationwide commemoration of the National Day of Mourning, the Senior General, along with council members, donors, philanthropists, and attendees, observed a moment of silence for one minute, paying tribute in unison with the people across the country.

The Senior General continued his speech, saying that regarding buildings, it is necessary to take action for the buildings that have been insured through certain insurance companies, including the payment of insurance premiums and the process of obtaining permission to demolish the buildings. The government will assist as much as possible in these efforts. Furthermore, for private construction projects, the government will also provide as much support as possible.

It is necessary to maintain stability and peace to carry out

similar reconstruction activities. Only with stability and peace can further economic development be achieved. However, armed terrorists have been engaging in actions such as disrupting the power supply and other destructive activities. Due to the threat of natural disasters, armed groups have announced a ceasefire for two weeks. Tatmadaw has not launched any attacks on the camps of ethnic armed groups but has only responded when attacked. The government has continuously kept the door open to meet and discuss with all ethnic armed organizations to make effective peace efforts. All ethnic people should have the opportunity to experience the benefits of peace and development, and it is necessary to engage in honest and open discussions. Armed groups must go through the peace processes. As terrorists have chosen to resolve politically driven issues through violence,



The Senior General accepts the cash donations in Nay Pyi Taw yesterday.

the government will continue with the plans laid down. Some ethnic armed organizations are not currently engaged in combat but are organizing and training for future attacks. Tatmadaw is aware of this and, as their actions are still considered attacks, the Tatmadaw will continue to take necessary security measures.

Then, the Senior General expressed thanks to all well-wishers, ministries and organizations for their contributions to rescue, relief and resettlement operations in the quake-affected areas.

The Senior General presented certificates of appreciation to well-wishers who donated cash. Chairman of National Dis-

aster Management Committee SAC Vice-Chairman Deputy Prime Minister Vice-Senior General Soe Win, Council Joint Secretary General Ye Win Oo, Council Members General Mya Tun Oo, Admiral Tin Aung San, General Nyo Saw, Lt-Gen Yar Pyae, U Wunna Maung Lwin, General Maung Maung Aye, Porel Aung Thein, Mahn Nyein Maung, Dr Hmuh Thang, Dr Ba Shwe, Khun San Lwin, Chief of the General Staff (Army, Navy and Air) General Kyaw Swa Lin, Commander-in-Chief (Navy) Admiral Htein Win and Commander-in-Chief (Air) General Tun Aung accepted cash donations and presented certificates of appreciation.

After the ceremony, the Senior General gave a tea party to those well-wishers. At the ceremony, well-wishers donated K104.44 billion and K12.4 billion worth of donated items, totalling K116.84 billion. — MNA/TTA

NATIONAL

Global, religious leaders extend condolences to SAC Chair PM Senior General Min Aung Hlaing

LEADERS and Heads of State and religious associations from seven countries sent messages of condolence to State Administration Council Chairman Prime Minister Senior General Min Aung Hlaing, expressing deep condolences over the damage and the large number of lives and injuries lost in a powerful earthquake that struck on 28 March 2025.

President of the Republic of Uzbekistan Shavkat Mirziyoyev, President of the Repub-

lic of Tajikistan Emomali Rahmon, Prime Minister of Nepal KP Sharma Oli, Prime Minister of Thailand Paetongtam Shinawatra, Chief Advisor of the Government of the People's Republic of Bangladesh Muhammad Yunus, Chief Executive of Macau Special Administrative Region Mr Sam Hou Fai of the People's Republic of China and General Secretary of Sri Lanka Aparapura Mahā Sangha Sabhā Most Venerable Balapitiye Siriseewali Nayake Thera sent message

of condolences to Chairman of the State Administration Council Prime Minister Senior General Min Aung Hlaing, respectively.

These messages stated that they were deeply saddened to learn from reports that Myanmar has suffered a severe earthquake, resulting in significant loss of lives, homes, and property. Their heartfelt sympathies go out to those affected by this disaster. They extend their deepest condolences to the victims and their families and wish for the

full recovery of those who have been injured. They believe that the resilience and strength of the people of Myanmar will help them emerge even stronger from this hardship. They express their solidarity with the government of Myanmar and the people affected by the earthquake. They trust that the people of Myanmar will find the strength and determination to rebuild their nation. During this challenging time, they stand together with the families who have lost their loved ones.

After the disaster, they are ready to provide all possible assistance for Myanmar's relief and reconstruction efforts. In this moment of deep sorrow, they have reflected on the impermanence of all things with profound insight and have performed meritorious deeds to benefit all those affected in Myanmar. The noble bond between nations continues to strengthen mutual understanding, compassion, wisdom, and unity, offering support in times of grief. — MNA/TTA

His Excellency Senior General Min Aung Hlaing Chairman of the State Administration Council and Prime Minister Republic of the Union of Myanmar

Your Excellency,

It is with deep sorrow and a heavy heart that I extend my condolences to you and the people of Myanmar following the devastating earthquake that struck your country on 28 March. The loss of so many lives is a tragedy that has touched us all, and I want to express my heartfelt sympathy to the families and communities affected.

As neighbours who share not only geographical borders but also a rich and intertwined history, the bond between Myanmar and Bangladesh runs deep. In this moment of sorrow, we stand united in our grief and offer our unwavering support. Please know that the people of Bangladesh share in your pain, and we are ready to assist in any way possible as you work to heal and rebuild in the wake of this disaster.

My thoughts are with the injured, the families of the victims, and all those whose lives have been disrupted. We take solace in the strength and resilience of your nation, and we trust that your people will find the courage to recover and rebuild, as they have done in the past.

With deepest sympathy,

Professor Muhammad Yunus
Chief Advisor
Government of the People's Republic of Bangladesh
30 March 2025

Senior General Min Aung Hlaing State Administration Council Chairman and Prime Minister

Excellency,

I am deeply saddened to learn of the devastating earthquake that has affected several regions of Myanmar.

On behalf of the Royal Thai Government and the people of the Kingdom of Thailand, I extend my heartfelt condolences to you and, through you, to the bereaved families and all those impacted by this tragedy.

In this time of great hardship, I wish to reaffirm Thailand's unwavering support for Myanmar's disaster relief efforts and the rebuilding of affected communities. I have every confidence that, with the resilience and strength of the Myanmar people, Myanmar will overcome this tragedy and emerge even stronger.

Please accept, Excellency, the renewed assurances of my highest consideration.

Paetongtam Shinawatra
Prime Minister of the Kingdom of Thailand
1 April 2025

His Excellency Senior General Min Aung Hlaing Prime Minister of the Republic of the Union of Myanmar Nay Pyi Taw

We were deeply saddened to learn of the devastating earthquake that struck the friendly country of Myanmar, resulting in the tragic loss of lives, numerous injuries, and extensive damage to infrastructure.

In light of the tragic outcome of this natural disaster, I extend my heartfelt condolences to Your Excellency, to the bereaved families, and the entire people of Myanmar, and a full recovery to all those affected.

With the expression of deepest sympathy and regret,

Emomali Rahmon
President of the Republic of Tajikistan
Dushanbe
29 March 2025

HE Senior General Min Aung Hlaing Chairman of the State Administration Council and Prime Minister of the Republic of the Union of Myanmar Nay Pyi Taw

Excellency,

I am deeply saddened by the devastating earthquake in Myanmar causing the loss of lives, and tremendous damage to properties. I, on behalf of the Government and the people of Nepal, would like to express my deepest sympathies and condolences to Your Excellency and through you to the Government and people of Myanmar who have been affected by the earthquake.

I am confident that the Government and the people of Myanmar will overcome the tragedy at the earliest. The Government and people of Nepal stand in solidarity with the Government and people of Myanmar at this difficult hour.

Please accept, Excellency, the assurances of my highest consideration.

KP Sharma Oli
Prime Minister
Kathmandu, Nepal
28 March 2025

His Excellency Senior General Min Aung Hlaing, Chairman of the State Administration Council and Prime Minister Republic of the Union of Myanmar Nay Pyi Taw

Excellency,

With profound sadness (sanvega), the Sri Lanka Aparapura Mahā Sangha Sabhā extends its deepest condolences to the people of Myanmar, who have suffered immense loss due to the devastating earthquake. Our thoughts and blessings are with the bereaved families, the injured, and all those affected by this tragic disaster.

Sri Lanka and Myanmar share a historic and unbreakable bond rooted in Buddhist heritage and the country's old cultural ties. In the 15th century, Burmese monks travelled to Sri Lanka to receive higher ordination under the guidance of Sri Lankan Mahā Theras during the Kotte era. More than 223 years ago, Sri Lankan monks journeyed to Myanmar, received higher ordination in Amarapura, Mandalay, and subsequently established our Amarapura monastic tradition in Sri Lanka, which continues to flourish to this day.

At this moment of sorrow, we have meditated upon this disaster in deep Vipassana, reflecting on the impermanence (Anicca) of all conditioned phenomena. We have dedicated merits for the well-being of all those affected in Myanmar. From the media, we became aware of the destruction of temples in Myanmar. This is a practical example of the impermanence of the world.

This sacred connection between our nations has fostered mutual spiritual enrichment, reinforcing the shared values of compassion, wisdom, and solidarity. During this difficult time, we stand in unwavering support of all the victims in Myanmar. We encourage all to seek solace in the timeless teachings of the Dhamma, drawing strength from the profound wisdom of the Buddha to navigate this sorrowful moment.

The Sri Lanka Aparapura Mahā Sangha Sabhā is committed to extending assistance to those affected, further strengthening the historic relationship between our two nations.

Most Venerable Balapitiye Siriseewali Nayake Thera
General Secretary
Sri Lanka Aparapura Mahā Sangha Sabhā

NATIONAL

FROM PAGE 5

**His Excellency
Senior General Min Aung Hlaing
Prime Minister of the Republic of the Union of Myanmar
Nay Pyi Taw**

Excellency,
We are deeply saddened to learn of the tragic loss of lives and severe injuries caused by the powerful earthquake that occurred in Myanmar.

In this difficult time, we extend our deepest condolences and concerns to the people of Myanmar, our close and friendly brethren.

We would like to express our solidarity and sympathy with the loved ones and families of those affected by the earthquake. We sincerely wish for the swift and full recovery of the injured.

With the expression of deepest sympathy and regret,
Shavkat Mirziyoyev
President
Republic of Uzbekistan

**Excellency,
Senior General Min Aung Hlaing.**

We are deeply saddened to learn about the loss of lives, injuries, destruction of property, and damage to essential infrastructure caused by the severe earthquake in Myanmar. On behalf of the Macau Special Administrative Region Government and its people, we extend our heartfelt condolences and support to those affected by the earthquake, including the injured and the families of the deceased. We also express our utmost respect to the rescue workers who are making tireless efforts in the relief operations.

The friendship between Myanmar and the Macau region remains strong and deep, with close mutual interactions between the people. During this challenging time, the people of Macau stand in solidarity with the families of the deceased and those affected. We would like to reiterate our deep concern and shared sympathy for the victims of the devastating earthquake, natural disasters, and the ongoing rescue efforts. After the disaster has passed, we are ready to provide any possible assistance in Myanmar's rescue and reconstruction efforts.

I wish for a speedy recovery for those affected and injured by this disaster. During this difficult time, I stand with the people of Myanmar. May the people of Myanmar have the strength to face the challenging tasks of recovery and rebuilding.

I respectfully express my continuous love and esteem for you.

Mr Sam Hou Fai
Chief Executive of Macau Special Administrative Region

Swift restoration planned for quake-damaged railways



MR staff work on repairing damaged sections of the railway.

A powerful earthquake on 28 March 2025 caused significant damage to railway infrastructure including the historic Inwa Bridge, tracks, bridges and station buildings in Sagaing Region, Mandalay Region, Shan State, Nay Pyi Taw Union Territory and Bago Region.

The earthquake caused damage to multiple railway

sections: 23 damaged spots along the Kyauktaga-Toungoo section of the Yangon-Mandalay railway, seven damaged spots and three bridge failures along the Toungoo-Nay Pyi Taw section, 30 damaged spots and eight bridge failures along the Thazi-Mandalay section, two bridge failures on the Thazi-Meiktila section and 11 damaged spots with two

bridge failures on the Pynmana-Taungdwingyi section.

Due to these damages, passenger and freight trains running along the Yangon-Mandalay and Pynmana-Taungdwingyi routes were temporarily suspended. However, train services on unaffected routes including Yangon Circular, Yangon-Mawlamyine, Yangon-Pyay, Yangon-Bago and Patheingyi, continue to operate as usual.

Myanma Railways is actively repairing the damaged tracks and bridges, mobilizing manpower, machinery, materials and efficient logistics across all regional railway divisions. Efforts are underway to restore train services as quickly as possible along the entire Yangon-Taungoo-Nay Pyi Taw-Thazi-Mandalay route. — Myanma Railways/KZL



This image displays bowsers carrying fuel for machinery. PHOTO: KO MOE

Ayeyawady Foundation & Max Energy supply free fuel for quake relief

THE Ayeyawady Foundation jointly conducted free fuel distribution across the nation with Max Energy on 1 April.

The Ayeyawady Foundation and Max Energy provided fuel for machinery, vehicles, generators, fire engines and ambulances which have been used for rescue work by the social organization teams and international rescue teams. The fuel was provided free for rescue work and they also donated drinking water and food for those who participated in rescue work.

Moreover, the Ayeyawady Foundation kept carrying out the rescue work in Nay Pyi Taw and Mandalay. The foundation also provided rice, instant noo-

dles, basic foodstuffs, drinking water and temporary tents for quake victims in Nay Pyi Taw.

Moreover, the foundation is carrying out repairs on roads in Nay Pyi Taw that were damaged by the earthquake, using machinery. The foundation is also working to restore landslides by refilling the affected areas. It also cooperates with local social welfare organizations in rescue work providing machinery and operators.

Free fuel support is also provided for machinery and ambulances at Max Energy filling stations, and the foundation also participated in cleanliness operations at Mandalay Maha Muni Buddha Image. — Shine Htet Zaw/KTZH

Statement of Deep Condolence and Sympathy

THE Yangon Yunnan Social Assistance Association expresses deep sorrow and heartfelt sympathy over the tragic loss of lives, injuries, and damage to religious and residential buildings caused by the powerful earthquake. The earthquake struck Myanmar on 28 March 2025, with its epicentre located about 21 kilometres northeast of Mandalay.

In light of this devastating event, we extend our sincere condolences to all those affected and pledge our commitment to participating in recovery and rehabilitation efforts for the earthquake victims to the best of our ability.

Yangon Yunnan Social Assistance Association
30 March 2025

NATIONAL



The rescue team from the Philippines.



The rescue team from Bangladesh.



The rescue team from Bhutan.



The Russian rescue team.



The rescue team from Laos.



The rescue team from Indonesia.

Global rescue teams and medical aid reach Nay Pyi Taw

INTERNATIONAL rescue and medical teams arrived at Nay Pyi Taw Tatmadaw Airport according to their respective flight schedules yesterday morning as the government continues

to carry out rescue and relief efforts in earthquake-impacted areas.

Teams from Russia, Indonesia, Thailand, Bhutan, the Philippines, Laos and Bangladesh

arrived along with humanitarian aid supplies, medicines, rescue teams, doctors and medical personnel. Similarly, Belarus also sent humanitarian aid supplies, medicines, rescue teams, doc-

tors and medical personnel to Nay Pyi Taw Tatmadaw Airport on the night of 31 March,

Officials from the Ministry of Social Welfare, Relief and Resettlement and the Ministry of

Foreign Affairs welcomed the arriving teams at the airport. These teams will promptly carry out rescue and medical assistance in the earthquake-affected areas. — MNA/KZL

Indian Navy ships arrive in Yangon to deliver lifesaving aid to quake-hit areas



A documentary group photo upon the arrival of two Indian naval vessels.

TWO Indian naval vessels carrying humanitarian aid, relief supplies and foodstuffs arrived at Thilawa Port, MITT in Yangon yesterday morning. These supplies are intended for use in rescue and rehabilitation efforts in

earthquake-affected areas. Officials from the Myanmar Navy and relevant departments welcomed the ships upon their arrival.

Following the arrival, a handover ceremony for the relief materials and

food was held. Yangon Region Chief Minister U Soe Thein, the Yangon Command commander, regional government ministers, Myanmar Navy officials, the Indian ambassador to Myanmar and other relevant officials attended the event.

During the ceremony, Cmde Prashant Handu NM from the Indian Navy and the Indian ambassador to Myanmar spoke about the relief aid. The ambassador then formally handed over the supplies to Yangon Region Chief Minister U Soe Thein, who expressed gratitude and presented a commemorative gift in return.

The Indian Navy ships delivered essential commodities, basic food items and medical supplies, which will be distributed to affected communities under the supervision of the Yangon Region government. More relief supplies and food will continue to arrive by Indian naval vessels. — MNA/KZL

UAE rescue teams and equipment land in Myanmar

THE Myanmar Government is working quickly to check earthquake damage, help people in need and welcome international aid. Two UAE military planes arrived at Yangon International Airport yesterday morning with rescue teams and equipment to support the affected areas.

The UAE team includes 40 rescue workers, five vehicles and important search and rescue tools. Officials from the Ministry of Foreign Affairs and the Ministry of Social Welfare, Relief and Resettlement welcomed them at the airport and helped plan their trip to the disaster areas. — MNA/KZL

OPINION

Value humanitarian aid, rescue efforts of foreign squads

IN Myanmar, on the afternoon of 28 March, a powerful earthquake struck, causing numerous casualties and significant damage to homes and buildings in Sagaing, Mandalay, Magway, and Bago regions, as well as Nay Pyi Taw Council Area and northeastern Shan State. The National Disaster Management Committee declared the affected areas as an emergency zone.

As the government has announced its plans to open all channels to seek aid for earthquake victims, foreign countries and international organizations provide aid for Myanmar one after another while conducting search and rescue operations.

The government is swiftly investigating and assessing the casualties, injuries, and missing persons in the earthquake-affected areas while simultaneously carrying out timely rescue and relief operations. Currently, rescue teams, doctors, and medical support staff from China, India, Russia, Singapore, Bangladesh, and Vietnam along with humanitarian aid supplies, medicines, food, and essential items, are joining the search, rescue, and care of the affected people. So, Myanmar people will never forget their good neighbourliness and ASEAN spirit at an important time to ease the tension of the earthquake in Myanmar.

Meanwhile, the government manages prompt investigation over loss and damage in the affected areas and evacuation of victims from the damaged and collapsed buildings caused by the severe earthquake. Furthermore, efforts are being made to invite and engage domestic and international donors to provide necessary assistance for disaster relief and humanitarian aid. In this regard, the Chairman of the State Administration Council and Prime Minister Senior General Min Aung Hlaing held a phone conversation on 29 March with Indian Prime Minister Mr Narendra Modi to discuss the prevailing situation and possible assistance.

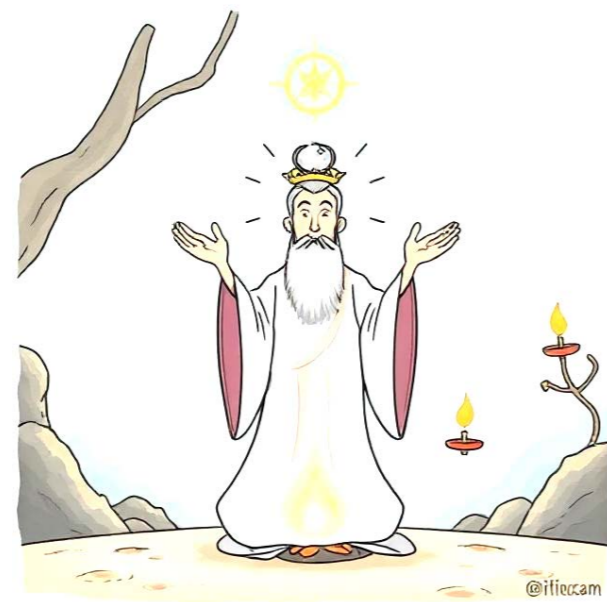
Moreover, the Senior General also made phone contact with ASEAN Alternate Chair Malaysian Prime Minister Dato' Seri Haji Anwar bin Ibrahim on 30 March to seek aid for loss and damage in Myanmar triggered by a powerful earthquake. Thanks to positive attitudes, both foreign leaders willingly pledged to provide necessary aid for the severe impacts of the powerful earthquake in Myanmar. Notably, only true friends are those who can fully understand and offer compassionate support during difficult times.

The government is swiftly investigating and assessing the casualties, injuries, and missing persons in the earthquake-affected areas while simultaneously carrying out timely rescue and relief operations. Currently, rescue teams, doctors, and medical support staff from China, India, Russia, Singapore, Bangladesh, and Vietnam along with humanitarian aid supplies, medicines, food, and essential items, are joining the search, rescue, and care of the affected people. So, Myanmar people will never forget their good neighbourliness and ASEAN spirit at an important time to ease the tension of the earthquake in Myanmar.

CONNECTING ON THE UNIVERSAL DANCE OF WORDS

By AUGUSTIN

Myanmar proverbs, with their beautiful and vivid imagery, enrich everyday conversations.



သိဒ္ဓိတင်
/thei di tin/
သိဒ္ဓိ = ဝုဏ်၊ တန်ခိုး၊ ကျက်သရေ။

သိဒ္ဓိ (thei di): This comes from Pali and essentially means “power”, “accomplishment”, “success”, or “spiritual power”. In a more casual sense, it can mean “good fortune” or “blessing”.

တင် (tin): This means “to place”, “to raise”, or “to establish”. In this context, it implies “to enhance” or “to empower”.

Therefore, “သိဒ္ဓိတင်” (thei di tin) means to empower something with spiritual power, or to enhance the good fortune of something with ritual recitations.

“သိဒ္ဓိတင်” ဆိုကတော့ တန်ခိုးတွေ၊ ကောင်းကျိုးတွေ ရအောင် မန္တရားတွေ ရွတ်ဖတ်ပြီး လုပ်တာကို ဆိုလိုပါတယ်။ ဥပမာ ဆင်းတုတော်ကို သိဒ္ဓိတင်တယ်ဆိုရင်၊ အဲဒီဆင်းတုတော်မှာ ပိုပြီး တန်ခိုးတွေ၊ ကျက်သရေတွေ ရှိအောင် လုပ်တာမျိုးပေါ့။ ဒါမှမဟုတ် လက်ဖွဲ့ပစ္စည်းတွေကိုလည်း သိဒ္ဓိတင်ကြတယ်။ လက်ဖွဲ့ပစ္စည်းမှာ ကာကွယ်ပေးနိုင်တဲ့ ကောင်းကျိုးပေးနိုင်တဲ့ အစွမ်းတွေ ပိုပြီး ရှိအောင် လုပ်တာမျိုးပဲ။

လက်ဖွဲ့တွေ၊ ဂါထာပစ္စည်းတွေကို ယုံကြည်တဲ့သူတွေက အဲဒီပစ္စည်းတွေမှာ တန်ခိုးတွေဝင်အောင် အထူးပြုလုပ်တဲ့ အစီအရင်တွေ လုပ်ရတယ်။ အဲဒီအစီအရင်တွေထဲမှာ မန္တရားတွေရွတ်တာလည်း ပါတယ်။ ဒါကြောင့် ကိုယ့်ကိုယ်ကိုယ်ဖြစ်ဖြစ်၊ ကိုယ်ချစ်တဲ့သူတွေ ကိုယ်ဖြစ်ဖြစ် ချီးမွမ်းတဲ့အခါမှာ “သိဒ္ဓိတင်တယ်” လို့ ပြောလို့ရတယ်။

To Honor with Ritual Recitations

Those who believe in the power of talismans and amulets must perform a special ritual to imbue these

objects with magical abilities. This ritual includes the recitation of specific verbal charms. Therefore, when a person praises their qualities or those of their loved ones, this act is referred to as “honouring with ritual recitations.”

The Myanmar idiom “To Honor with Ritual Recitations” refers to a cultural practice where individuals perform specific rituals to enhance the power of talismans and amulets. Believers in these objects view them as sources of protection or good fortune, and to activate their magical properties, a special ritual is necessary. This ritual involves reciting particular verbal charms or incantations that are believed to imbue the objects with their intended powers.

Additionally, the idiom extends to the act of praising oneself or loved ones, which is seen as a form of honouring. By verbally acknowledging and celebrating personal qualities or those of close relatives, individuals reinforce positive attributes and intentions. This practice not only reflects a deep-rooted belief in the power of words and rituals but also emphasizes the importance of self-affirmation and recognition within the community.

USAGES:
Raise the Bar
Definition: To increase standards or expectations, thereby enhancing performance or quality.
Example: The new manager decided to raise the bar for customer service, expecting all employees to provide exceptional support.

Blessing in Disguise
Definition: A seemingly negative situation that results in something positive.
Example: Losing that job was a blessing in disguise; it pushed me to pursue my dream career.

Put a Spell On
Definition: To enchant or empower someone or something, often used in a magical or metaphorical context.
Example: The artist’s performance put a spell on the audience, leaving them mesmerized and wanting more.

Give a Leg Up
Definition: To provide assistance or support that enhances someone’s chances of success.
Example: The internship gave her a leg up in the competitive job market, helping her land a full-time position.

Light a Fire Under
Definition: To motivate or inspire someone to take action, thereby enhancing their performance or drive.
Example: The coach lit a fire under the team, encouraging them to give their best effort in the championship game.

Empower Someone
Definition: To give someone the authority or power to do something, enhancing their capabilities.
Example: The training program is designed to empower employees to take initiative and make decisions. Sprinkle a Little Magic



သတ္တုချ
/thá tu. cha./

အပြစ်/တာဝန်ရှိကြောင်း ဆန်းစစ်သည်။ ပြဿနာတစ်ခုရဲ့ အကြောင်းအရင်းကို ရှာသည်။ သတ္တုချကြည့်လိုက်လျှင် ဘာအပေါ်ပိုကျသည်...

“သတ္တုချ” ဆိုတာကတော့ သတ္တုရိုင်းတွေကို အမှန်ဖြစ်အောင် ကြိုတင်ပြီး လိုချင်တဲ့သတ္တုကို ထုတ်ယူတဲ့ လုပ်ငန်းစဉ်ကို ပြောတာပဲ။ ပြဿနာတစ်ခုကို အဆေးစိတ် စစ်ဆေးပြီး အပိုင်းပိုင်း ခွဲထုတ်တာကိုလည်း “သတ္တုချတယ်”လို့ သုံးကြတယ်။ ဥပမာ တစ်ယောက်ယောက်က အလုပ်တစ်ခုကို သေချာမလုပ်လို့ အပြစ်ရှိလားဆိုတာကို စစ်ဆေးတဲ့အခါမှာ “သူ့ကို သတ္တုချလိုက်တော့” လို့ ပြောလို့ရတယ်။ ဒါမှမဟုတ် ပြဿနာတစ်ခုရဲ့ အကြောင်းအရင်းကို ရှာတဲ့အခါမှာလည်း “ဒီပြဿနာကို သတ္တုချပြီး ကြည့်ရမယ်” လို့ ပြောလို့ရတယ်။

Try to place responsibility. To Pulverize the Metal Ore
In the typical process of metallurgy, the ore is crushed into a fine powder, and its components are separated through various methods to extract the desired metal. Consequently, when someone studies a problem in detail and breaks it down into its parts, this is referred to as “pulverizing the metal ore.”

The Myanmar idiom “To Pulverize the Metal Ore” metaphorically describes the analytical process of breaking down complex problems into manageable components. In metallurgy, the initial step involves crushing ore into a fine powder, allowing for the separation of its various elements to extract the desired metal. This meticulous process symbolizes the approach one takes when tackling intricate issues in life or work.

When someone “pulverizes the metal ore,” they engage in a detailed examination of a problem, dissecting it into its fundamental parts to better understand and address it. This idiom emphasizes the importance

of thorough analysis and critical thinking, suggesting that by breaking down a challenge, one can identify solutions more effectively.

USAGES:
Break It Down
Definition: To analyze something by separating it into smaller, more manageable parts.
Example: Let’s break it down into smaller tasks so we can tackle the project more effectively.

Get to the Bottom of
Definition: To investigate and discover the true cause or nature of something.
Example: We need to get to the bottom of this issue before it escalates further.

Take a Closer Look
Definition: To examine something more carefully or in detail.
Example: I think we should take a closer look at the data to identify any discrepancies.

Analyze the Situation
Definition: To examine and evaluate the details of a situation to understand it better.
Example: Before making a decision, it’s important to analyze the situation thoroughly.

Dig Deeper
Definition: To investigate more thoroughly or to look beyond the surface.
Example: If we want to understand the root cause of the problem, we need to dig deeper into the data.

Sift Through
Definition: To examine and sort through information or materials to find what is relevant or important.
Example: She had to sift through a mountain of paperwork to find the necessary documents.

Dissect the Issue
Definition: To break down a problem into its parts for detailed analysis.
Example: The team will dissect the issue during the meeting to find a viable solution.



‘သေတ္တာမှောက်’
/thei ta hmaok/

ရုပ်သေးပွဲမှာ သေတ္တာတစ်လုံးထဲမှာ အရုပ်မျိုးစုံ ထည့်ထားတယ်။ သေတ္တာကို မှောက်ချလိုက်ပြီး ဘယ်အရုပ်ကိုမဆို ဆွဲယူ

ကာ အဲဒီအရုပ်နဲ့ဆိုင်တဲ့ ဇာတ်သိချင်းဆို ကပြနိုင်တဲ့ ပညာရှင်ကို ‘သေတ္တာမှောက်’ လို့ခေါ်တယ်။ အခြားကိစ္စတွေမှာလည်း ထူးချွန်သူကို ‘သေတ္တာမှောက်’ လို့ လိုက်သုံးကြတာ ဖြစ်တယ်။

ရုပ်သေးပညာမှာတင် မဟုတ်ဘူး။ ဘာမဆို ကျွမ်းကျင်တဲ့လူကို “သေတ္တာမှောက်” လို့ သုံးကြတယ်။ ဥပမာ၊ အလုပ်တစ်ခုမှာ ဘယ်အလုပ်ကိုမဆို လုပ်နိုင်တဲ့သူ၊ ဒါမှမဟုတ် ပြဿနာတစ်ခုကို ဘယ်လိုပဲခက်ခက် ချက်ချင်းဖြေရှင်းနိုင်တဲ့သူကို “သူက သေတ္တာမှောက်ပဲ” လို့ ပြောကြတယ်။ တော်ရုံတန်ရုံ မဟုတ်ဘူး။ ဘက်စုံတော်တဲ့သူကို ပြောတာပါ။

One Who Upturns the Box
In a Myanmar marionette show, different puppets are stored in large boxes, from which they are taken out and hung backstage for the performance. Therefore, a puppeteer who can skillfully handle all types of puppets is called a “box-turner.” As a result, any person who is capable of performing a variety of tasks is referred to as “one who upturns the box.”

The Myanmar idiom “One Who Upturns the Box” metaphorically describes a versatile individual who can adeptly handle a variety of tasks or roles. In the context of a traditional marionette show, puppets are stored in large boxes, and the puppeteer, known as a “box-turner,” skillfully selects and manages different puppets for the performance. This ability to manipulate various puppets reflects the puppeteer’s expertise and adaptability.

Similarly, when someone is referred to as “one who upturns the box,” it signifies their capability to navigate multiple responsibilities or challenges with ease. This idiom highlights the value of versatility and resourcefulness in both personal and professional settings.

USAGES:
Jack of All Trades
Definition: A person who is competent in many areas but may not be an expert in any one field.
Example: He’s a jack of all trades; he can fix cars, cook, and even do basic plumbing.

Renaissance Man
Definition: A person with a wide range of interests and abilities, excelling in multiple fields.
Example: Leonardo da Vinci was a true Renaissance man, excelling in art, science, and engineering.

Versatile
Definition: Able to adapt or be adapted to many different functions or activities.
Example: Her versatile skills make her an asset to the team, as she can handle marketing, design, and customer service.

Multi-talented
Definition: Having many different talents or skills.
Example: The multi-talented artist not only paints but also sings and dances.

All-rounder
Definition: A person who is competent in many areas or activities.
Example: As an all-rounder, she can play multiple sports and excel in academics.



NATIONAL

Ongoing rescue, rehabilitation, healthcare in Nay Pyi Taw

A powerful earthquake and several aftershocks hit Myanmar on 28 March, causing damage to roads, bridges and buildings in Nay Pyi Taw Council Area, and also resulting in casualties. The international rescue teams and local teams jointly conducted rescue work, healthcare services and rehabilitation in respective townships promptly yesterday.

The rescue teams, doctors and nurses from international countries, foreign fire brigade, Tatmadaw and combined corps, staff from the Ministry of Health and Directorate of Medical Services and social welfare organizations proceeded to quake-hit areas in Nay Pyi Taw Council Area and conducted rescue work yesterday.

Rescue teams from Vietnam, along with doctors and nurses, are conducting search and rescue operations in the earthquake-affected staff housing areas of Zabuthiri Township using search and rescue dogs, support vehicles, and specialized equipment to aid in their efforts.

The teams are also transferring the bodies of victims to the respective township hospitals, providing medical care to those injured, and offering both physical



Rescue operations are in action in the Nay Pyi Taw Council Area.

and psychological support to ensure the well-being of the affected individuals.

Moreover, the local rescue teams, altruistic teams, medics and combined teams also went to quake-affected areas and conducted search and rescue

operations using special equipment to assist the affected residents. They are also providing necessary medical care to the injured using mobile medical units and ensuring their swift transfer to the nearest hospitals and clinics. The elder-

ly were also moved to safe and secure locations.

Similarly, the roads and bridges in Nay Pyi Taw Council Area were also destroyed due to the earthquake, and the officials launched repair work on them to facilitate transport flow.

The well-wishers and organizations donated foodstuffs, water bottles, cash, clothes and medicines, and the government also arranged temporary tents, mobile water trucks, and temporary water tanks, and mobile trucks selling groceries at cheap prices for quake-hit locals and staff in Nay Pyi Taw.

The rescue teams, medics and nurses from international countries arrived in Myanmar with humanitarian assistance and medicines for rescue work, 270 from China, 200 from India, 212 from Russia, 89 from Singapore, six from AHA Centre, 50 from Thailand, 106 from Vietnam, 50 from Malaysia, 122 from the United Arab Emirates, 24 from Laos, 66 from Belarus, eight from Turkiye, 40 from Bhutan, 90 from the Philippines, 55 from Bangladesh and 97 from Indonesia, totalling 1,485 from 16 countries arrived in the country until 31 March. — MNA/KTZH

Timely rescue, relief efforts underway in quake-affected areas

SIX regions and states in Myanmar were severely affected by a powerful earthquake on 28 March and reported 2,790 deaths, 4,439 injuries and 413 missing persons as of 1 April.

The local and foreign well-wishers donated for quake victims, and 338 rescue team members and 14 planes from seven countries carrying res-

cue and relief items and supplies weighing 125.4 tonnes arrived at Nay Pyi Taw International Airport yesterday.

Rescue teams are actively participating in rescue work in the affected areas, and efforts are also being made to ensure that relief supplies reach the affected people as soon as possible. — MNA/KTZH

Myanmar firefighters save woman trapped in Zabuthiri Township



Firefighters are struggling to save a 62-year-old government retiree from the debris.

A powerful earthquake caused severe structural collapses, including building No 3369, Nyanna Theikdhi Ward, Zabuthiri Township on 28 March 2025.

A 62-year-old retired Branch Clerk from the Ministry of Health named Daw San San Htwe, who is the mother-in-law of a Ministry of For-

eign Affairs staff member was trapped inside.

Under the close supervision of Director-General U Myat Thu, a rescue team led by Yangon Region Fire Services Department Head U Min San Aye carried out the operation. The rescue began at approximately 8:15 am and firefighters successfully extracted her

alive by 9:15 am.

Firefighters from the Fire Services Department collaborated with both local and international search and rescue teams. As of today, they have rescued a total of 649 people – 334 men and 315 women. They have recovered 501 deceased individuals including 245 men and 256 women. — MNA/KZL



Russian medics deliver healthcare services at the temporary clinic.

The people are urged to receive vaccination of COVID-19 without fail as full-time vaccination of COVID-19 and receiving booster shots can effectively mitigate infection of the virus, severe suffering from the disease and increase of death rate due to the disease.

NATIONAL

Myanmar deports 5 Bangladeshis

MYANMAR authorities sent back five Bangladeshis, who were involved in online scams and online gambling, via the Myanmar-Thailand Friendship Bridge II on humanitarian grounds and for bilateral relations yesterday.

Kayin State Social Affairs Minister U Saw Tun Aung inspected the transfer processes.

The handover ceremony was attended by Kayin State Social Affairs Minister U Saw

Tun Aung, Mr Md Fahad Pervez Bosunia, Consul of the Bangladesh Embassy to Thailand and officials from the Immigration Department of Tak Province, Thailand.

From 30 January to 1 April, a total of 8,724 foreign nationals who entered Myanmar illegally were identified and detained. Of them, 6,312 were systematically handed over to the relevant countries via Thailand in line

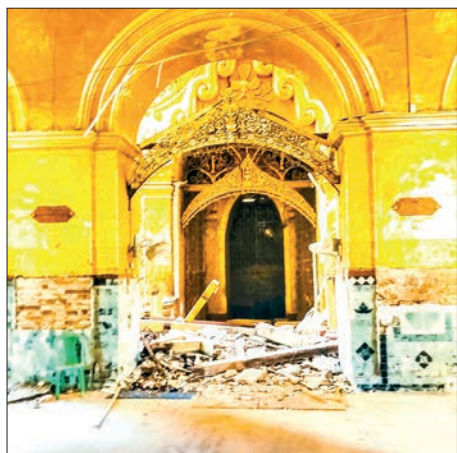
with legal procedures, and the remaining 2,412 foreign nationals are ready for repatriation and are being well cared for.

The government is also intensifying efforts to crack down on online scams and online gambling by cooperating with international countries, including neighbouring countries, especially through the Myanmar-China-Thailand Trilateral Cooperation. — MNA/KTZH



Immigration officials processing deportation of five Bangladeshi nationals.

Mandalay's Mahamuni set to reopen for devotees



This photo reveals the condition of the Mahamuni Pagoda following the earthquake.

THE Mahamuni Pagoda in Mandalay will be reopened as soon as possible for devotees to visit and pay respects, according to U Mya Win, Chairman of the Mahamuni Pagoda Board of Trustees.

The powerful earthquake that struck on 28 March caused damage within the pagoda compound. However, efforts are underway to restore the Mahamuni Pagoda quickly so that worshippers can visit again soon.

U Mya Win stated, "The Maha Muni Buddha image itself was not damaged by the earthquake. However, some structures, including the archways, corridors, main platform, and certain smaller stupas, suffered damage. A few visitors sustained minor injuries during the tremor; but as of now, there have been no reported fatalities. Security personnel and local philanthropic groups are working together to clear debris. Restoration efforts will proceed as quickly as possible."

The strong earthquake struck Myanmar on 28 March. The tremor caused structural damage to high-rise buildings, residential homes, pagodas, and monastic structures in Mandalay. — ASH/MKKS

Thai King sends aid to Myanmar after devastating quake

THE Royal Thai Embassy in Yangon has handed over relief supplies donated by His Majesty the King and Queen to the earthquake-hit Myanmar.

Two special aircraft from the Royal Thai Air Force with donated items arrived at Nay Pyi Taw Airport at 10 am on 1 April.

The donations included medical kits, temporary tents, instant noodles, boiled rice cans, fish cans, flashlights, generators and other necessary relief supplies. The Thai Ambassador to Myanmar handed over the King's relief supplies to U Soe Kyi, deputy minister of Social Welfare, Relief and Resettlement.

The items will be transferred to the Disaster Management Centre (DMC) and distributed to the affected areas and the Thai Emergency Response Team



Handing over relief supplies donated by His Majesty the King at Nay Pyi Taw Airport.

and the Thai Embassy will continue to provide relief and assistance to Myanmar; the embassy said.

The embassy also announced that the Songkhram Thingyan Festival,

which was scheduled to be held on 1 April at the Thai Embassy in Yangon, has been cancelled due to the loss of life and damage caused by the severe earthquake in Myanmar. — MT/ZN

Myanmar Theatrical Association to launch relief camps in Mandalay, Sagaing

THE Myanmar Theatrical Association (Central) has announced plans to establish relief camps in Mandalay and Sagaing to assist its members affected by the earthquake, according to Daw Padamya Kay Khaing, an executive member of the association.

The relief efforts will be carried out in collaboration with the Myanmar Theatrical Association (Sagaing Region) and the Myanmar Theatrical Association (Mandalay Region).

U Nay Win, Secretary of the Myanmar Theatrical Association (Central), stated, "The Myanmar Theatrical Association (Central) plans to open two relief camps in Mandalay and Sagaing starting from 31 March. We have informed the respective township theatrical associations so that affected members and their families can report their situations. Donors may also contact these township associations to assist."

The relief camps will be set up at Sagaing's Nandawya Ward and Mandalay's Lokanat Hall where Myanmar Theatrical Association (Mandalay) is located. — ASH/MKKS

'Myaysa' film crew to donate K70 million to quake victims

THE Shwe Nadi Shwe Yi film production family and the cast of the movie Myaysa will donate K70 million to support earthquake victims, according to Academy Award-winning actor Myint Myat.

"We will donate K70 million to monks and civilians affected by the earthquake. This amount comes from the ticket sales of the Myaysa screenings at 10 am and 12 pm on 28 March in Mandalay, Nay Pyi Taw, Toungoo and Bago. The entire proceeds will be donated to those in need, with the support of the Shwe Nadi Shwe Yi production family and the Myaysa film team. We wish for the safety of all affected," said Myint Myat.

The Myaysa film, written and scripted by Lwan Wai Aung and directed by Nay Paing. It features performances by Academy Award winners Myint Myat and Aye Myat Thu along with actors Bhone Min Nay La, Si Thu Win, Than Tha Nyi, Sinma, Htoo Charr, San Yu and many others. — ASH/KZL

ECONOMY WORLD

Brazil eyes bigger role in global agricultural trade amid rising protectionism

AS US President Donald Trump's growing protectionist trade policies drive the country inward, Brazilian experts said the shift promotes Brazil's agricultural exports.

Antonio Diegues, an economics professor at the University of Campinas, told Xinhua that Brazil is well-positioned to respond to shifts in commodity trade flows caused by US tariffs and trade confrontations.

"Brazil is seen as a reliable and safe supplier, especially now, with a bumper harvest and growing frustration among importers over the United States' trade war posture," said Diegues.

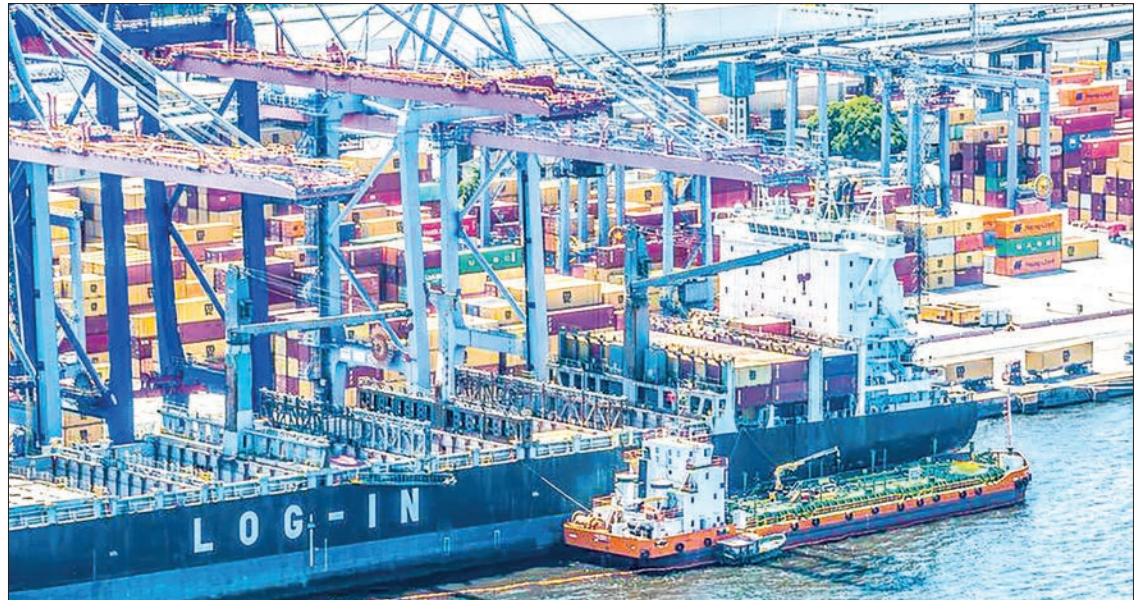
He added that many countries are actively seeking alternatives to US commodities to avoid the repercussions of Wash-

ington's increasingly unilateral trade policies.

Brazil's ability to meet this demand will depend on internal improvements, particularly in infrastructure, and a continued neutral geopolitical stance, he noted.

"Our foreign policy emphasizes sovereignty and pragmatism over ideology -- unlike the United States, which has historically framed trade through a political lens, and is now doing so more overtly," Diegues said.

Former diplomat Luiz Augusto de Castro Neves, president of the Brazil-China Business Council, said while there may be new market openings due to US missteps, Brazil's long-term growth should come from systemic productivity improvements rather than exter-



An aerial photo taken on 7 March 2025 shows a view of a port in Rio de Janeiro, Brazil. **PHOTO: XINHUA**

nal circumstances.

"We don't rely on other countries pulling back," he said. "We are focused on scaling our

own productivity to remain more competitive across the board."

That ambition, however, faces domestic challenges. Bar-

tolomeu Braz, head of the Brazilian Soybean Producers Association, said Brazil's logistics remain a bottleneck. — Xinhua

US renews pressure on Japan to import more American goods



US President Donald Trump gestures while speaking during an executive order signing event at the White House in Washington on 31 March 2025. **PHOTO: GETTY/KYODO**

THE United States on Monday renewed pressure on Japan to increase its imports of American automobiles and other products, claiming they face many nontariff barriers.

In the 2025 National Trade Estimate Report on Foreign Trade Barriers, the Office of the US Trade Representative also urged Japan to reduce obstacles to US exports of farm and fishery products. For ex-

ample, it reiterated its criticism of Japan's highly regulated rice market. The annual report, covering about 60 major US trade partners, was released two days before President Donald Trump plans to impose reciprocal tariffs.

US Treasury Secretary Scott Bessent told Fox News that Trump is due to announce the tariffs, targeting goods from countries around the world with

matching duties, at 3 pm on Wednesday.

In addition to Trump's forthcoming announcement, the United States will start imposing an additional 25 per cent tariff on automobiles imports on Thursday.

"No American president in modern history has recognized the wide-ranging and harmful foreign trade barriers American exporters face more than President Trump," US Trade Representative Jamieson Greer said in a statement.

"Under his leadership, this administration is working diligently to address these unfair and nonreciprocal practices, helping restore fairness and put hardworking American businesses and workers first in the global market," Greer said.

In Japan's auto market, the USTR report claimed, "A variety of nontariff barriers impede access," citing, for instance, safety standards and subsidies concerning clean energy vehicles. — Kyodo

NEWS IN BRIEF

IMF chief says US tariff risks dragging on global growth

UNCERTAINTY around US tariffs risks denting global economic activity, Kristalina Georgieva, managing director of International Monetary Fund (IMF), said on Monday.

The longer the uncertainty persists about US President Donald Trump's approach to tariff policy, the greater the risk to the outlook, Georgieva was quoted by Reuters as saying.

"Uncertainty, our research shows, the longer it goes, the more it may negatively impact growth," she said in an interview with Reuters.

The IMF is seeing signs in recent data that consumer and investor confidence is weakening, and that then translates into impacts on growth prospects, which may be enough to trigger a "small correction" downward in the IMF's global growth forecast, Georgieva said. — Xinhua

Laos moves towards sustainable infrastructure development

LAOS has taken a significant step towards sustainable infrastructure development with the recent launch of the Infrastructure Asset Management Enabling Environment (IAM EE) Roadmap.

The roadmap outlines strategies for effectively managing public infrastructure, such as roads, schools and hospitals, with an emphasis on resilience, inclusivity, and sustainability. This initiative aligns with Laos' commitment to the United Nations Sustainable Development Goals (SDGs), Lao News Agency reported on Tuesday.

The roadmap is crucial for ensuring efficient and sustainable infrastructure investment. The Lao government, along with its partners, will focus on mobilizing resources, strengthening institutional frameworks, and implementing best practices in asset management to ensure that infrastructure remains resilient and sustainable. — Xinhua

Thailand's manufacturing sector contracts slightly in March

THAILAND'S manufacturing sector contracted slightly in March due to a slowdown in output growth as incoming new orders dropped amid declining export demand, a survey showed on Tuesday.

The Southeast Asian country's manufacturing purchasing managers' index (PMI) came in at 49.9 in March, down from 50.6 in February, signalling a marginal deterioration in manufacturing sector con-

ditions, according to S&P Global. A PMI reading above 50 indicates expansion in the manufacturing sector, while a reading below 50 reflects contraction.

Manufacturing production growth slowed

to a near-neutral level in March as some manufacturers increased output to fulfil existing orders, while others decreased production owing to reduced new orders, S&P Global said in a statement.—Xinhua



Workers work at the Great Wall Motors (GWM) manufacturing plant in Rayong, Thailand, 12 January 2024. PHOTO: XINHUA

SoftBank Group plans up to additional \$40 bln investment in OpenAI

SOFTBANK Group Corp said Tuesday it will make a maximum additional \$40 billion investment in OpenAI, calling the US startup a key partner in advancing toward its goal of realizing artificial super intelligence.

The announcement comes on top of the \$2.2 billion investment the Japanese tech giant has already made in Open AI, the developer of chatbot ChatGPT, since September 2024. The additional transaction is expected to be completed by the end of this year. —Kyodo

MANUFACTURER NAME CHANGE ADVERTISING

Pesticide Registration Board granted registration of the following (2) pesticides with their Mnaufacturer Name as "HEBEI XINGBAI AGRICULTURAL TECHNOLOGY CO.,LTD". The Manufacturer Name of these (2) pesticides will be changed from "HEBEI XINGBAI AGRICULTURAL TECHNOLOGY CO.,LTD" to "HEBEI XINGBAI KANGWEI SCIENCE & TECHNOLOGY CO.,LTD". People's Republic of China as below.

Sr.	Product Name	Registration No.	Current Manufacturer Name	New Manufacturer Name
1.	Li Bu (Emamectin Benzoate 5.7% WG)	F2023-4170	HEBEI XINGBAI AGRICULTURAL TECHNOLOGY CO.,LTD	HEBEI XINGBAI KANGWEI SCIENCE & TECHNOLOGY CO.,LTD
2.	Sone Xing (Thiamethoxam 25% WDG)	F2023-4273	HEBEI XINGBAI AGRICULTURAL TECHNOLOGY CO.,LTD	HEBEI XINGBAI KANGWEI SCIENCE & TECHNOLOGY CO.,LTD

Any objection regarding to this can be lodged within 14 days to the Co-Secretary, Pesticide Registration Board, Plant Protection Division, Department of Agriculture, Insein Township, Yangon. "HEBEI XINGBAI KANGWEI SCIENCE & TECHNOLOGY CO.,LTD".

CLAIMS DAY NOTICE

M.V INTRA BHUM VOY.NO. (117E)

Consignees of cargo carried on **M.V INTRA BHUM VOY.NO. (117E)** are hereby notified that the vessel will be arriving on **20-3-2025** and cargo will be discharged into the premises of **AWPT** where it will lie at the consignee's risk and expenses and subject to the byelaws and conditions of the Port of Yangon.

Damaged cargo will be surveyed daily from 8 am to 11:20 am and 12 noon to 4 pm to Claim's Day now declared as the third day after final discharge of cargo from the Vessel.

No claims against this vessel will be admitted after the Claims Day.
Phone No: **2301185**

Shipping Agency Department
Myanma Port Authority

Agent For:

M/S REGIONAL CONTAINER LINES

CLAIMS DAY NOTICE

M.V WISDOM VOY.NO. (009N)

Consignees of cargo carried on **M.V WISDOM VOY. NO. (009N)** are hereby notified that the vessel will be arriving on **20-3-2025** and cargo will be discharged into the premises of **AWPT** where it will lie at the consignee's risk and expenses and subject to the byelaws and conditions of the Port of Yangon.

Damaged cargo will be surveyed daily from 8 am to 11:20 am and 12 noon to 4 pm to Claim's Day now declared as the third day after final discharge of cargo from the Vessel.

No claims against this vessel will be admitted after the Claims Day.
Phone No: **2301185**

Shipping Agency Department
Myanma Port Authority

Agent For:

M/S K.NAVIGATE CO., LTD

CLAIMS DAY NOTICE

M.V MAERSK VALENCIA VOY.NO. (509W)

Consignees of cargo carried on **M.V MAERSK VALENCIA VOY.NO. (509W)** are hereby notified that the vessel will be arriving on **20-3-2025** and cargo will be discharged into the premises of **MITT/MIP** where it will lie at the consignee's risk and expenses and subject to the byelaws and conditions of the Port of Yangon.

Damaged cargo will be surveyed daily from 8 am to 11:20 am and 12 noon to 4 pm to Claim's Day now declared as the third day after final discharge of cargo from the Vessel.

No claims against this vessel will be admitted after the Claims Day.
Phone No: **2301185**

Shipping Agency Department
Myanma Port Authority

Agent For:

M/S SEALAND MAERSK ASIA PTE LTD

CLAIMS DAY NOTICE

M.V GOLSAN VOY.NO. (SCY1177)

Consignees of cargo carried on **M.V GOLSAN VOY. NO. (SCY1177)** are hereby notified that the vessel will be arriving on **21-3-2025** and cargo will be discharged into the premises of **MIP** where it will lie at the consignee's risk and expenses and subject to the byelaws and conditions of the Port of Yangon.

Damaged cargo will be surveyed daily from 8 am to 11:20 am and 12 noon to 4 pm to Claim's Day now declared as the third day after final discharge of cargo from the Vessel.

No claims against this vessel will be admitted after the Claims Day.
Phone No: **2301185**

Shipping Agency Department
Myanma Port Authority

Agent For:

M/S LAND AND SEA INTERMODAL LOGISTICS
SDN BHD LINE

CLAIMS DAY NOTICE

M.V ISEACO GENESIS VOY.NO. (254N)

Consignees of cargo carried on **M.V ISEACO GENESIS VOY.NO. (254N)** are hereby notified that the vessel will be arriving on **21-3-2025** and cargo will be discharged into the premises of **AWPT** where it will lie at the consignee's risk and expenses and subject to the byelaws and conditions of the Port of Yangon.

Damaged cargo will be surveyed daily from 8 am to 11:20 am and 12 noon to 4 pm to Claim's Day now declared as the third day after final discharge of cargo from the Vessel.

No claims against this vessel will be admitted after the Claims Day.
Phone No: **2301185**

Shipping Agency Department
Myanma Port Authority

Agent For:

M/S NEW GOLDEN SEA LINES

CLAIMS DAY NOTICE

M.V PACANDA VOY.NO. (023W)

Consignees of cargo carried on **M.V PACANDA VOY.NO. (023W)** are hereby notified that the vessel will be arriving on **21-3-2025** and cargo will be discharged into the premises of **AWPT** where it will lie at the consignee's risk and expenses and subject to the byelaws and conditions of the Port of Yangon.

Damaged cargo will be surveyed daily from 8 am to 11:20 am and 12 noon to 4 pm to Claim's Day now declared as the third day after final discharge of cargo from the Vessel.

No claims against this vessel will be admitted after the Claims Day.
Phone No: **2301185**

Shipping Agency Department
Myanma Port Authority

Agent For:

M/S PACIFIC INTERNATIONAL LINES

ROLLING UPDATES

WORLD

‘Heartbreaking’ floods swamp Australia’s cattle country



This frame grab taken from video footage provided by The Queensland Fire Department on 28 March 2025 via AFPTV shows rescue workers taking residents from a house on a flooded street in the town of Adavale in south-west Queensland. **PHOTO: HANDOUT/QUEENSLAND FIRE DEPARTMENT/AFP**

WHOLE herds of cattle have drowned in vast inland floods sweeping across the Australian outback, officials said Tuesday, as the muddy tide drenched an area the size of France.

Swollen rivers burst their banks after unusually heavy downpours last week over outback Queensland, an arid region home to some of the country’s largest cattle ranches.

Officials said more than 100,000 livestock — cattle,

sheep, goats and horses — had been swept away, were missing, or had drowned.

“These are only early indications of the magnitude of this disaster and while these preliminary numbers are shocking, we are expecting them to continue to climb as flood waters recede,” said state agriculture minister Tony Perrett.

“It’s heartbreaking to consider what western Queenslanders will be going through over the weeks and months as

they discover the full extent of losses and damage — and start the long slog to start again.”

Researchers have repeatedly warned that climate change amplifies the risk of natural disasters such as bushfires, floods and cyclones.

Flood waters stretched some 500,000 square kilometres (190,000 square miles) across sparsely populated western Queensland, Perrett said, a landmass roughly equivalent to France. — AFP

NEWS IN BRIEF

Wildfire in California prompts evacuations in multiple counties

A wildfire erupted in central California over the weekend quickly spread to over 1,000 acres (4.04 square kilometres) as of Monday and prompted evacuations in multiple counties.

According to the Cal Fire, the blaze, dubbed Silver Fire, was ignited at 2:11 pm local time Sunday in Inyo County near the state border with Nevada and quickly grew to 1,000 acres (4.04 square kilometres) in six hours.

On Monday morning, the fire spread to 1,250 acres (5.06 square kilometres) with zero containment, Cal Fire said, noting strong winds and gusts reaching up to 35 miles per hour (56.3 kilometres per hour) fuelled the fire, which “created hazardous conditions, grounding some firefighting aircraft and complicating containment efforts”.

Moreover, “The winds are very erratic,” Cal Fire spokesperson Chloe Castillo said, “One minute they’re pushing north, the next they’re going east.” — Xinhua

Icelandic village evacuated as lava flows from volcanic eruption

A fishing village in southwest Iceland was evacuated Tuesday after lava began spewing from a volcanic eruption, the eighth to hit the region since the end of 2023.

The Icelandic Meteorological Office (IMO) said “an eruption has started on the Sundhnuksgigar Crater Row” north of the fishing village Grindavik.

Live video feeds showed lava spewing out of a fissure in the ground.

The meteorological agency said a helicopter would be despatched “to confirm the exact location and size of the eruption”.

The IMO warned earlier that an eruption could be imminent as “an earthquake swarm” began in the early morning on the in a similar fashion to previous eruptions. The swarm was followed by deformations and pressure changes in boreholes operated by energy company HS Orka. “Both independent measurements were a clear sign of the onset of a magma intrusion,” the IMO said. — AFP

Malaysia gas pipeline inferno injures 100: fire officials

A massive fire caused by a gas pipeline leak forced people from their homes and injured more than 100 during Eid celebrations near Malaysia’s capital on Tuesday, fire officials said.

The inferno, which was visible kilometres away, was caused by “a gas pipeline leak stretching approximately 500 metres (1,600 feet)”, said fire officials in Selangor state near Kuala Lumpur.

The valve to the affected pipeline belonging to Malaysia’s state-run oil firm Petronas has been shut off, the fire officials said in a statement.

While the early morning blaze was coming under con-



Smoke rises from a fire caused by a gas pipeline leak in Puchong, Selangor on 1 April 2025. A massive fire forced people from their homes during Eid celebrations as it towered over residential districts on 1 April near the Malaysian capital Kuala Lumpur. **PHOTO: AFP**

trol in the afternoon, more than 100 people were injured, the fire department told AFP.

About 60 of the injured were hospitalized, Selangor deputy police chief Mohamad Zaini Abu Hassan was quoted as saying by local broadcaster Astro Awani.

No deaths were reported but about 50 houses were affected by the blaze, the fire department said.

Residents were enjoying a public holiday for Eid celebrations in Muslim-majority Malaysia when they were forced to flee the suburban area.

Nizam Mohamad Asnizam, 49, who lives 100 metres from

the site of the fire, fled from his house with his family in his car.

“When I woke up, I saw the fire raging, with an extraordinary sound. I have never experienced a fire with this kind of sound. The sound was terrifying. It felt like a jet engine was next to me,” he told AFP.

“Stepping on the floor was like stepping on a hot wok. The heat was like putting your head in an oven, it felt like I was burning.”

Dashcam footage shared online showed a column of fire from what appears to be an explosion, creating a massive fireball that shot into the sky. — AFP

SPORTS

City striker Haaland set for ankle injury lay-off

MANCHESTER City face being without top scorer Erling Haaland for several weeks after the striker suffered an ankle injury in their 2-1 FA Cup win away to Bournemouth on Sunday. The 24-year-old, who has 30 goals in 40 matches, was seen leaving the Vitality Stadium wearing a protective boot and using crutches after

a game where he missed an early penalty, but then scored City's equalizer.

The club confirmed that on Monday he had undergone tests and "will now seek specialist consultation to confirm

the full extent of the injury".

"Assessment remains ongoing to ascertain a full prognosis. The expectation is that Erling will be fit in time to play a further part in the remainder of this season, including this summer's FIFA

Club World Cup," read a statement on the Manchester City.

Although Pep Guardiola's side are out of the race for this season's Premier League title, the team still has to battle for a top-four finish to ensure a place in next season's Champions League — although the Premier League's UEFA ranking will probably mean the league's fifth-placed team will also qualify for that tournament.

City will play Nottingham Forest in the FA Cup semifinal at Wembley on April 26 as they look for a trophy to redeem a hugely disappointing season.

Haaland's absence will mean January signing Omar Marmoush will take on a bigger role along with youngsters such as Nico O'Reilly and James McAtee, who have both impressed in the few chances they have had this campaign. — Xinhua



Manchester City's Norwegian striker (9) Erling Haaland receives medical attention after picking up an injury during the English FA Cup quarter-final football match between Bournemouth and Manchester City at the Vitality Stadium in Bournemouth, on the south coast of England on 30 March 2025. PHOTO: AFP

Thrills assured as Atletico Madrid hosts Barcelona for Copa del Rey final spot



Atletico Madrid's Norwegian forward (9) Alexander Sorloth (C) scores their fourth goal during the Spanish Copa del Rey (King's Cup) semifinal first leg football match between FC Barcelona and Club Atletico de Madrid at at Estadi Olimpic Lluis Companys in Barcelona, on 25 February 2025. PHOTO: AFP

ATLETICO Madrid and FC Barcelona face off in a second semifinal in the Copa del Rey that promises to be a treat for neutral fans.

The first leg between them ended 4-4 after an incredible match in Montjuic, where Atletico led 2-0, before Barca completely overturned the tables and looked to be cruising 4-2, only for Atletico to score two late goals.

The two teams met in La

Liga in Atletico's Metropolitan Stadium three weeks ago, with Atletico leading again thanks to goals from Julian Alvarez and Alexander Sorloth, before an incredible Barca fightback gave Hansi Flick's side a 4-2 win.

That defeat, coupled with a draw last weekend, means Atletico is effectively out of the race for the La Liga title and after its painful UEFA Champions League exit to Real Madrid, the Copa del Rey is its only

hope of silverware this season.

It has been non-stop for Barcelona following the international break, with a home game against Osasuna last Thursday, followed by another match against Girona on Sunday, meaning Wednesday's game will be the club's third in just seven days and Flick has tried to juggle his squad accordingly.

Raphinha hasn't played since returning from playing with Brazil, while Frenkie de Jong was a second-half substitute against Girona and both will start on Wednesday, along with Alejandro Balde, who was also rested at the weekend.

Pau Cubarsi should also be fit after recovering from the ankle problem he picked up on Spain duty and will probably partner Inigo Martinez in central defence.

Although Atletico has conceded eight goals in the last two meetings with Barca, Diego Simeone's side has been one of the few teams to get some joy against Barcelona's high defensive line and offside trap. — Xinhua



Manchester United's Portuguese midfielder (8) Bruno Fernandes leaps into the arms of Manchester United's Portuguese defender (20) Diogo Dalot as he celebrates scoring their third goal during the English Premier League football match between Leicester City and Manchester United at King Power Stadium in Leicester, central England on 16 March 2025. PHOTO: AFP

MANCHESTER United coach Ruben Amorim has said that Portuguese midfielder Bruno Fernandes is "not going anywhere" after recent reports suggesting that Real Madrid are interested in signing the 30-year-old playmaker.

Fernandes has been United's standout player in a difficult season, with 14 goals and 14 assists in all competitions where he has been one of the club's few consistent performers.

That has seen him linked with Real Madrid, who are on the lookout for a creative midfielder to replace 39-year-old Luka Modric, but when asked about a possible sale to Madrid, Amorim

was clear in his reply.

"No, it's not going to happen," replied the coach, who insisted Fernandes was vital for the club's rebuilding.

"I want Bruno here because we want to win the Premier League again so we want the best players," continued Amorim, who insisted that United would be able to keep their star player.

"We are in control of the situation and I feel that he is really happy here" he said, adding that the signs of frustration Fernandes sometimes shows are "because he wants success so badly".

"He's not going anywhere because I've already told him," concluded Amorim. — Xinhua



A SpaceX Falcon 9 rocket with the Fram2 mission astronauts aboard lifts off from launch pad LC 39A at the Kennedy Space Centre in Cape Canaveral, Florida on 31 March 2025. PHOTO: AFP

SpaceX launches private astronauts on first crewed polar orbit

SPACEX launched the first human space-flight directly over Earth's polar regions on Monday – a days-long, privately funded orbital mission involving four astronauts.

Named "Fram2" after the famed Norwegian ship built in the 19th century for Arctic and Antarctic expeditions, the mission will feature a range of experiments including taking the first X-ray in space and growing mushrooms in microgravity.

It's hoped that the research will support future long-duration space travel to Mars.

The crew launched aboard a SpaceX

Crew Dragon capsule on a Falcon 9 rocket at 9:46 pm Monday (0146 GMT Tuesday) from NASA's Kennedy Space Centre in Florida.

Cheers rang out in the control room as the powerful rocket roared upward, lighting up the night sky with a long, orange plume of flame as the craft began its journey toward Earth's North and South Poles.

"With the same pioneering spirit as early polar explorers, we aim to bring back new data and knowledge to advance the long-term goals of space exploration," mission commander Chun Wang said

before the launch.

Wang, a Chinese-born Maltese adventurer and co-founder of crypto companies *f2pool* and *skatefish*, selected the rest of the crew: vehicle commander Jannicke Mikkelsen, a Norwegian film director; mission pilot Rabea Rogge, a robotics researcher from Germany; and mission specialist and medical officer Eric Philips, an Australian polar explorer.

The team trained for eight months in preparation for the approximately four-day trip, including a wilderness expedition in Alaska to simulate living in close quarters under harsh conditions. — AFP

Global GDP could shrink 40% by 2100 under 4 degrees warming, study warns

A new economic forecast projects that a four degrees Celsius rise in global temperatures could slash world GDP by 40 per cent by 2100, a sharp increase from previous estimates of just 11 per cent, the University of New South Wales (UNSW) said on Tuesday.

The findings by the UNSW Institute for Climate Risk & Response (ICRR) challenge longstanding economic models that have shaped global climate policies, reinforcing the urgency of stronger climate action.

Lead researcher Timothy Neal said previous economic models failed to account for cascading supply chain disruptions caused by extreme weather events. Traditionally, economists assessed climate damage by comparing historical weather events to economic growth, overlooking the global interconnectivity of modern economies.

"Because these damages haven't been taken into account, prior economic models have inadvertently concluded that even severe climate change wasn't a big problem for the economy," Neal said, adding disruptions in one region will ripple across global supply chains, affecting all nations, including colder ones like Canada and Russia.

In reality, "no country is immune," he said. The revised projections bolster the case for limiting warming to 1.7 degrees Celsius, aligning with accelerated decarbonization targets such as the Paris Agreement, and well below the 2.7 degrees Celsius threshold previously deemed acceptable. — Xinhua

World economies brace for Trump tariffs deadline

US trading partners scrambled Tuesday to prepare for the latest raft of Donald Trump tariffs, after the US president left unclear who would be targeted but promised to be "very kind" in addressing what he says are unfair trade imbalances.

Trump — who has been making unprecedented use of presidential powers since taking office in January — said he could announce as early as Tuesday night exactly what "reciprocal tariffs" will be imposed.

According to the Republican billionaire, the world's biggest



US President Donald Trump speaks as he signs an executive order targeting ticket scalping in the Oval Office of the White House in Washington, DC, on 31 March 2025. PHOTO: AFP

economy has been "ripped off by every country in the world", and he is promising "Liberation Day" for the United States.

Asked for details, he told reporters Monday: "You're going to see in two days, which is maybe tomorrow night or probably Wednesday."

But he added: "We're going to be very nice, relatively speaking, we're going to be very kind."

Critics warn that the strategy risks a global trade war, provoking a chain reaction of retaliation by major trading partners like China, Canada and the

European Union.

Over the weekend, China, South Korea and Japan agreed to strengthen free trade between themselves.

But Trump said he was not worried the levies would push allies toward Beijing, adding that a deal on TikTok could also be tied to China tariffs.

White House Press Secretary Karoline Leavitt said the goal on Wednesday would be to announce "country-based tariffs," although Trump remains committed to imposing separate, sector-specific charges. — AFP